

Above Southend Pier looking across towards North Kent, Canvey Island on the right and London in the distance

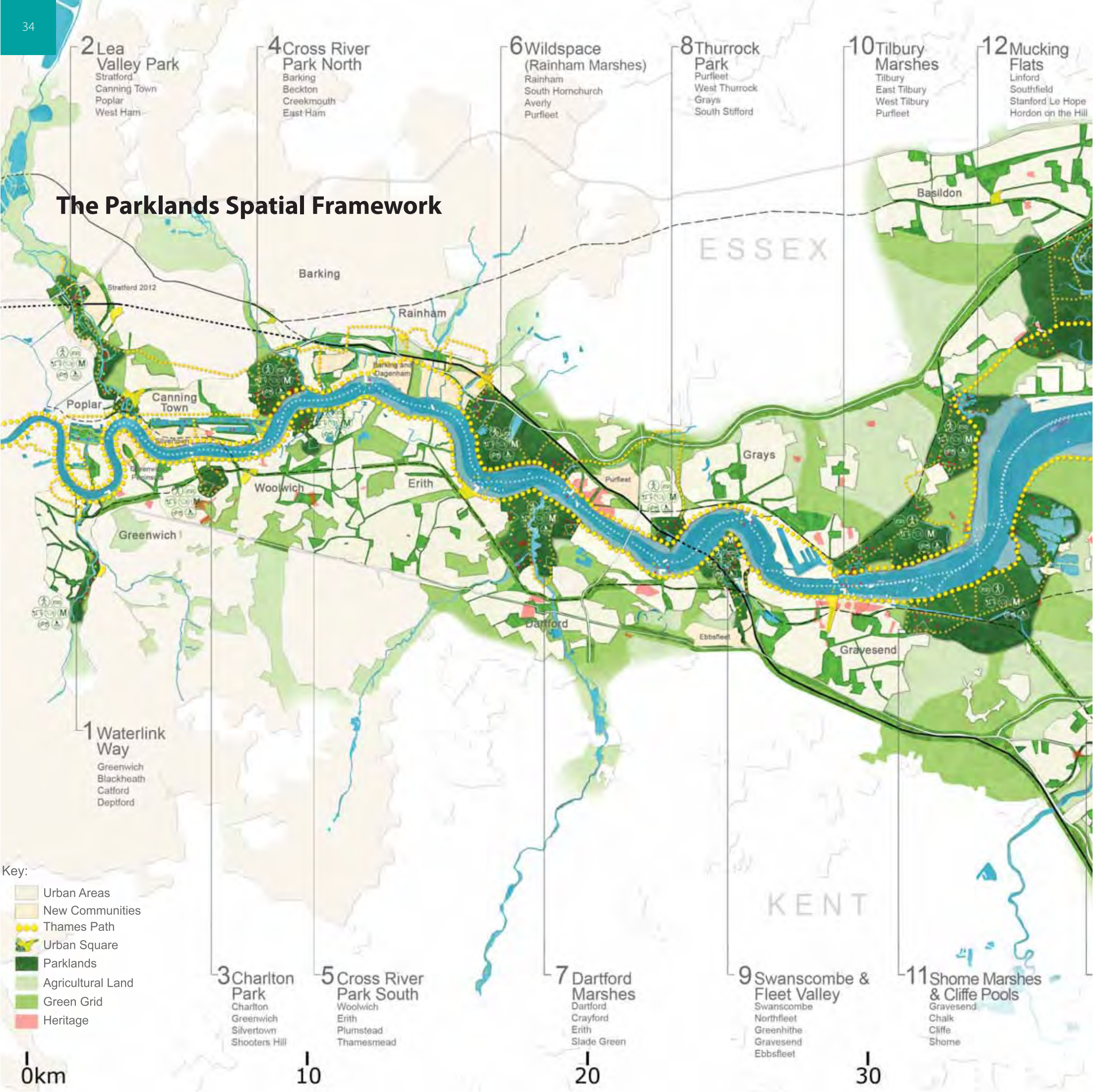
# four

the Parklands vision...





# The Parklands Spatial Framework





By focusing on environmental improvement, the Parklands vision will help to: improve perceptions of the area; improve the quality of life for 1,500,000 existing residents; create long term value by reconnecting communities to the exceptional landscapes of the Estuary; encourage a greater number of visitors to the area; and help to attract investment, jobs and people to the Thames Gateway.

Eight 'themes' have been identified that combine to form the vision for Parklands and will help deliver the Thames Gateway Delivery Plan's five ambitions. These include the blue, green and brown landscapes of the Thames Gateway. They take account of the many projects that are planned, underway or have recently been completed.

**13 South Essex Marshes**  
 Canvey Island  
 Corringham  
 Coryton  
 Fobbing

**17 Stonebridge Park**  
 Southend - on - Sea  
 Shoeburyness  
 Wakering  
 Southchurch

**16 Allhallows Marshes**  
 Grain  
 Allhallows  
 Stoke  
 Kingsnorth

**18 Sheerness - Minster Marshes**  
 Sheerness  
 Minster - on - Sea  
 Queensborough  
 Halfway Houses

**22 Isle of Harty**  
 Warden  
 Eastchurch  
 Leysdown - on - Sea

**14 Medway Park**  
 Chattenden  
 Rochester  
 Frindsbury  
 Wainscott  
 Strood

**15 Capstone Valley**  
 Chatham  
 Gillingham  
 Walderlade  
 Park Wood

**19 Sittingbourne Park**  
 Sittingbourne  
 Kemseley  
 Murston  
 Milton Regis

**20 Teynham Park**  
 Teynham  
 Lynsted  
 Conger  
 Mockbeggs

**21 Faversham Park**  
 Faversham  
 Uples  
 Dargate  
 Graveney



## 1

## Water Parklands

Reinvigorate the blue landscape as a major environmental, recreational, transport and economic asset – a key to sustainable development in the Thames Gateway.

The blue landscape could be reinvigorated as a positive feature of the landscape which everyone within the Thames Gateway can relate to and experience. The rivers Thames, Medway and Swale hold the area together. As well as providing opportunities for recreation, Water Parklands also has a role to play in improving biodiversity, protecting and enhancing the Estuary, helping with flood control, dealing with likely future changes in sea levels and improving water quality.

### REVEAL LOST TRIBUTARIES

The major rivers are fed (from west to east) by a number of tributaries including the Lea, Deptford Creek, Roding, Beam, Ingrebourne, Cray and Darent, Mar Dyke, Fleet, Mucking Creek, Holehaven Creek, Leigh Creek, Bartlett Creek, Stangate Creek, Milton Creek, Conyer Creek, Windmill Creek, Capel Fleet and Faversham Creek.

Many have been piped underground or channelled into artificial river channels, particularly in urban areas. Work by the Zoological Society of London, RSPB, Natural England, the Environment Agency and others shows that many tributaries remain rich in wildlife and amenity. These tributaries could be rediscovered as natural watercourses as far as possible, so that they can once again be enjoyed by local communities and visitors as green corridors.

### WETLAND IMPROVEMENT

Thames Gateway has major wetland areas. The outer Estuary forms a continuous complex extending as far west as Gravesend and Tilbury, and has created important wetland habitats, for example the inner Thames Marshes. Each wetland could be made accessible to surrounding communities as far as possible, without compromising their importance as wildlife habitats through increased awareness and participation in ongoing management. These could be important recreational areas.

There is potential for wetlands to contribute to sustainable water management including flood water management, water capture, storage, cleansing and distribution. This must be consistent with, and responsive to, their importance as wildlife habitats and fish breeding grounds.



Medway river front



Cliffe Pools, North Kent

◀ **Medway river front:** The River Medway has the potential to be one of Britain's most important rivers for leisure activities and has a fascinating and illustrious maritime past. Many of the attractions and historical buildings on the river reflect this heritage.

◀ **Cliffe Pools restoration:** The restoration plan for Cliffe Pools will allow it to fulfil its wildlife potential. The restoration work requires hundreds of thousands of cubic metres of Thames dredging to be pumped into the pools, supporting the development of the port facilities at London Gateway.

## ACTIVATE UNDER-USED DOCKS AND CANALS

Thames Gateway has large dock complexes that no longer fulfil their original role. These have the potential to serve local communities by being reactivated as public realm.

Under-used docks could be transformed into new habitats, parks, local play areas, sports facilities, cultural activity, waterfront attractions, public art, water taxis, and floating amenities including restaurants, museums and visitor attractions. For example, the Royal Docks in East London is the largest still water space in the area and has further potential for recreational use. There are also opportunities to further activate and regenerate waterways and canals including the River Lea Navigation and the Thames and Medway Canal.

## REACTIVATE PIERS, PROMENADES AND WATERFRONTS

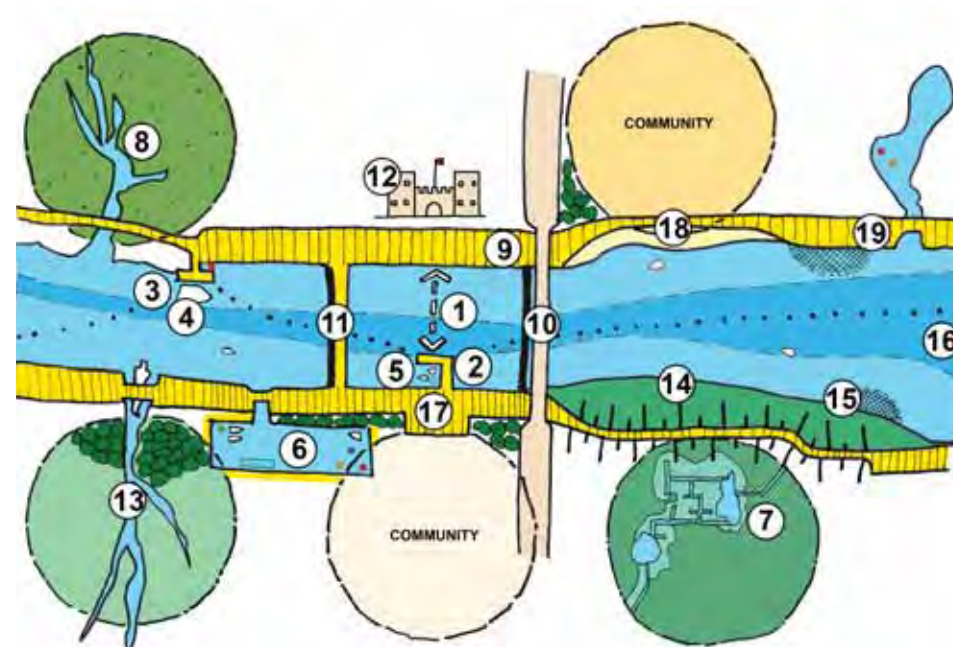
Gravesend Town Pier, the oldest remaining cast iron pier in the world, has reopened following its successful regeneration. Other historic pier locations have been identified which could be regenerated – or recreated in traditional or modern idiom – for use as visitor attractions and recreational or commercial transport.

Opportunities exist to improve waterfronts and waterfront access at these key points. Urban areas have the potential to develop thriving waterfronts or promenades which can contribute to local amenity, social interaction and tourism. Opportunities also exist to enhance marinas and water sport facilities.

## NEW CONNECTIONS ACROSS RIVERS

The rivers were main thoroughfares and connectors in the past. Now these can act as barriers, particularly in the outer reaches where the Estuary measures 10 km across at its widest point.

By activating river edges and improving accessibility, new opportunities arise to increase river activity and re-establish links across the Estuary. This could be recreational as well as functional, including possible increased freight use.



- |                           |                        |                            |                       |
|---------------------------|------------------------|----------------------------|-----------------------|
| 1. Cross river ferry      | 7. Reclaimed marshland | 11. Thames path connection | 15. Fisheries         |
| 2. Leisure centre         | 8. Wetland restoration | 12. Heritage regeneration  | 16. Deepwater channel |
| 3. New jetties            | 9. Thames path         | 13. Revealed tributaries   | 17. Urban waterfront  |
| 4. Ocean cruise terminals | 10. Connection         | 14. Sandbanks              | 18. Urban beach       |
| 5. New marina             |                        |                            | 19. Rural waterfront  |
| 6. Reactivated dock       |                        |                            |                       |

Concept sketch of the Water Parklands activities on and adjacent to the water and the relation to the surrounding communities and landscapes

- ▶ **River Quaggy:** The recent restoration of the River Quaggy in Greenwich is an excellent example of river restoration. As a result of regeneration and flood defence improvement, featureless playing fields at Sutcliffe Park have become a haven for grey heron, jack snipe, wagtails and dragonflies. New paths and boardwalks bring people close to reed beds, wild meadows and trees.

- ▶ **Oare slipway:** Providing access for water-based activity.

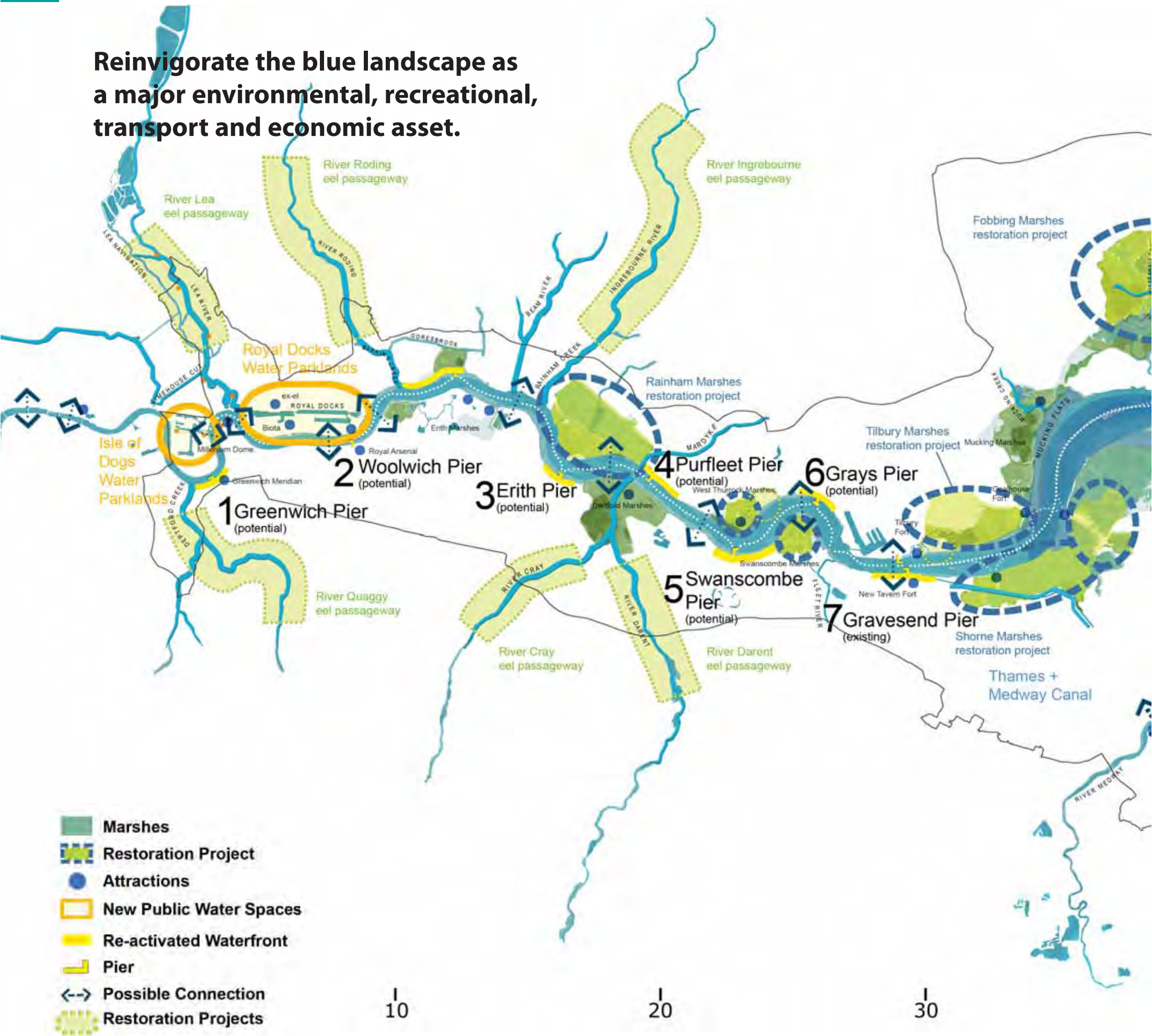


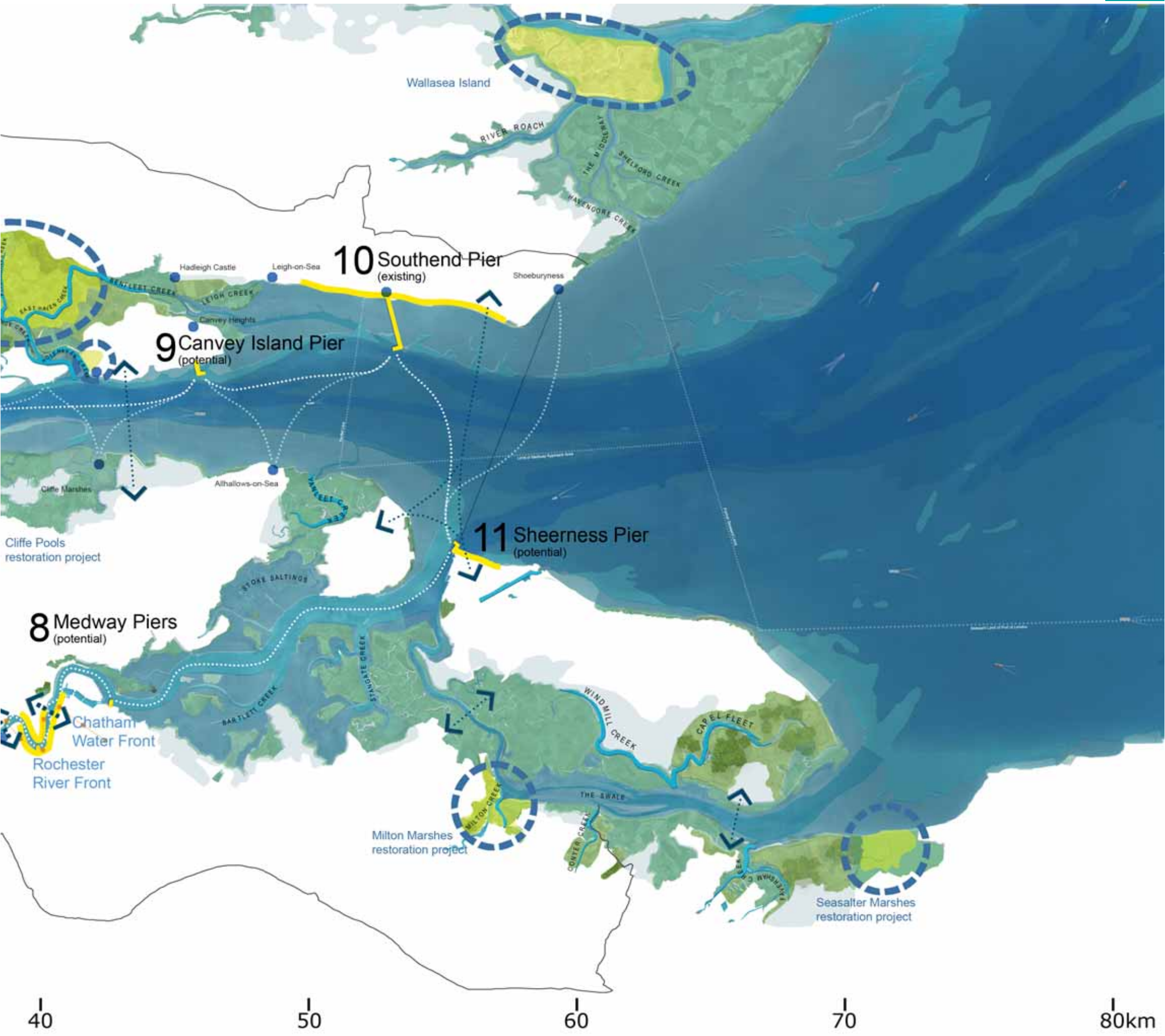
Oare slipway, Faversham



Restoration of River Quaggy, Greenwich

**Reinvigorate the blue landscape as a major environmental, recreational, transport and economic asset.**





**10** Southend Pier  
(existing)

**9** Canvey Island Pier  
(potential)

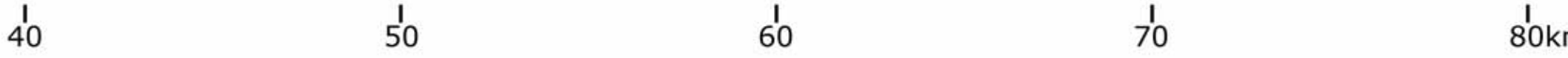
**11** Sheerness Pier  
(potential)

**8** Medway Piers  
(potential)

Chatham  
Water Front  
Rochester  
River Front

Milton Marshes  
restoration project

Seasalter Marshes  
restoration project





## 2

## Community Parklands

# Improve access for existing and new communities to significant landscapes.

Landscapes such as Greenwich Park and Blackheath just outside the Thames Gateway, and Hampstead Heath, Regent's Park and Richmond Park to the west, exert a strong and positive influence on surrounding areas and help to strengthen pride of place. These are actively used as places of recreation, culture and education.

There are a number of major landscapes that exist in the Gateway which could have a similar impact on the communities within the region. They each have their own identity and are rich in heritage and character. They range from derelict industrial land to natural landscapes, agricultural land and planned historic landscapes.

Regeneration of these landscapes, increased accessibility and making clear links between communities and green and open spaces will help to reinforce local identity. Connecting communities to each other via these landscapes will also have significant social and cultural benefits. Community Parklands will help to improve value throughout the Thames Gateway.

Urban areas should have positive frontage to Parklands landscapes as well as be a worthy backdrop to them. In some existing landscapes – for example Greenwich – the built environment defines the landscape and enhances it both visually and functionally. The interface between urban areas and significant landscapes must aim to do this as well.

These landscapes are destinations in their own right, but they are also the principal means of ensuring that communities – both existing and new – are linked to the river, its tributaries and the Estuary landscape.

### COMMUNITY PARKLANDS MODEL

By adapting and reinterpreting existing landscapes and improving accessibility, we can strengthen the bond between people and the Estuary. There are opportunities to create continuous links between urban areas and the community landscapes based on pedestrian and cycle links, served by public transport wherever possible. Community Parklands will improve quality of life by providing access to nature.

Each could have areas set aside for cultural activity, local festivals and sport. These could be formal or informal, and there could be a programme of events that draws local people and visitors to these places all year.

Community Parklands could provide opportunities for local food production or include educational facilities for sustainable energy.

Education and visitor centres are an effective way of engaging with local communities, acting not only as a destination but a hub for community engagement.



Flag Riverside Country Park, Medway



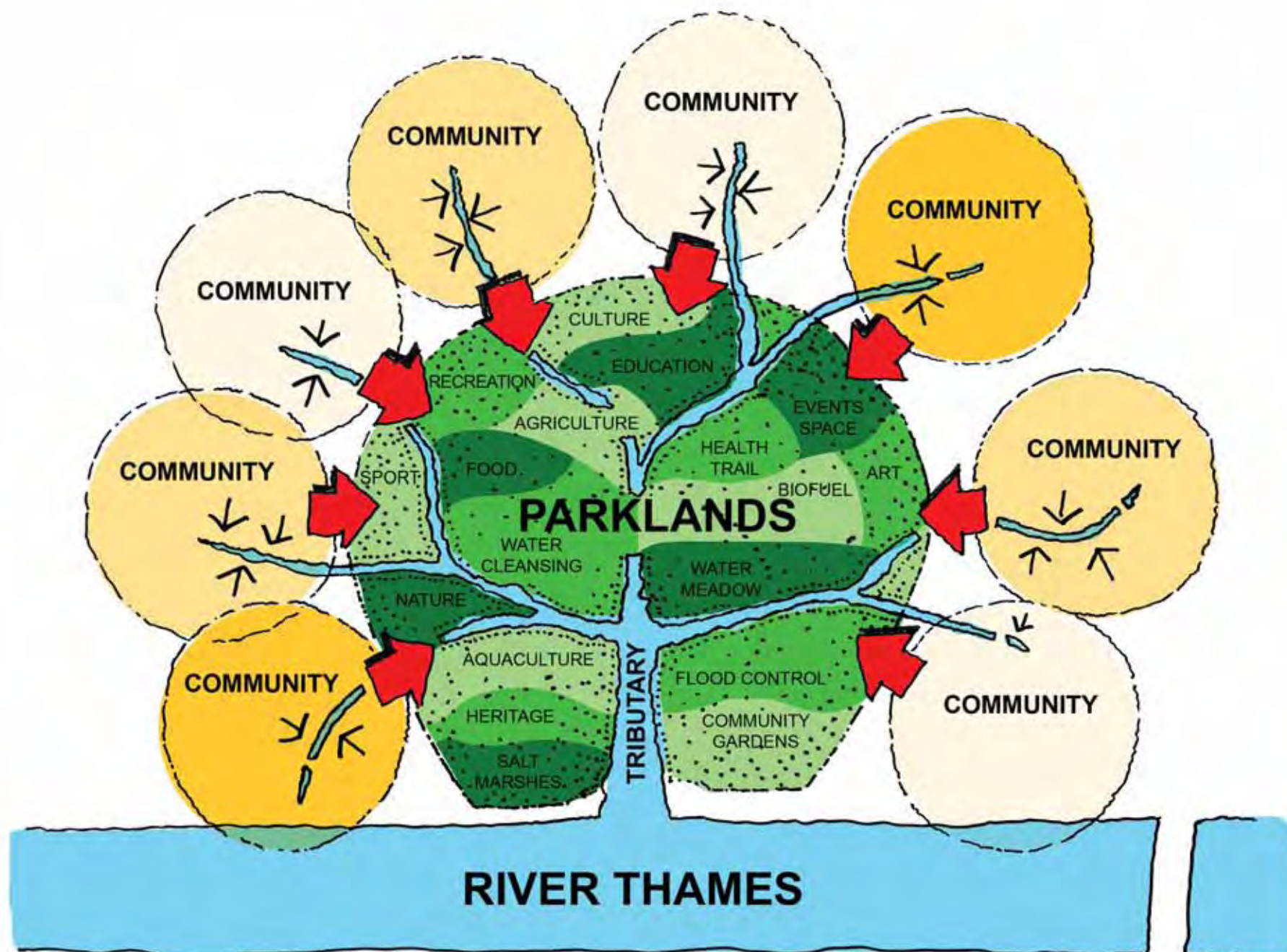
Rainham Marshes, Thurrock



Rainham Marshes Visitor Centre, Thurrock



Lea River Park



The Parklands Model linking communities to Parklands and to the River Thames and its tributaries

- ◀ **Flag Riverside Country Park:** This park in Medway provides views of the Estuary, has an urban fringe location, and attracts 450,000 visitors a year.
- ◀ **Rainham Marshes:** Rainham Marshes will provide opportunities for people of all ages to learn about the wildlife living on the marshes as well as the area's history.
- ◀ **Lea Valley Park:** The park is made up of a mix of countryside, urban green spaces, heritage sites, country parks, nature reserves and lake and riverside trails, as well as sports and recreation centres covering over 10,000 acres (40 km<sup>2</sup>).
- ▶ **Greenwich Peninsula:** Three community parks created by English Partnerships.
- ▶ **Shorne Woods Country Park:** Large ancient woodland, with a new eco-friendly visitor centre now offers woodland and heritage exploration, making it one of Kent's most popular country parks.



Ecology Park, Greenwich Peninsula



Shorne Woods Visitor Centre, Gravesham

## Improve access for existing and new communities to significant landscapes.

2 Lea Valley Park

4 Cross River Park North

6 Wildspace (Rainham Marshes)

12 Mucking Flats

5 Cross River Park South

8 Thurrock Park 10 Tilbury Marshes

3 Charlton Park

7 Dartford Marshes

1 Waterlink Way

9 Swanscombe & Fleet Valley

11 Shorne Marshes & Cliffe Park

-  Communities
-  Green Grid
-  Community Parklands

► **Olympic Legacy Park:** The Olympic Legacy Park in Stratford aims to teach people about their carbon footprint and to encourage a healthier way of life. The park has areas for cultural activities, local festivals and sport. It also includes educational facilities consisting of a small biomass demonstration plant fed by locally grown willow, a wind turbine and food production. The Olympic Delivery Authority has committed to a target to recycle or reuse 90 per cent of waste from the 'big build' phase of the project, which is unprecedented for a project of this scale.



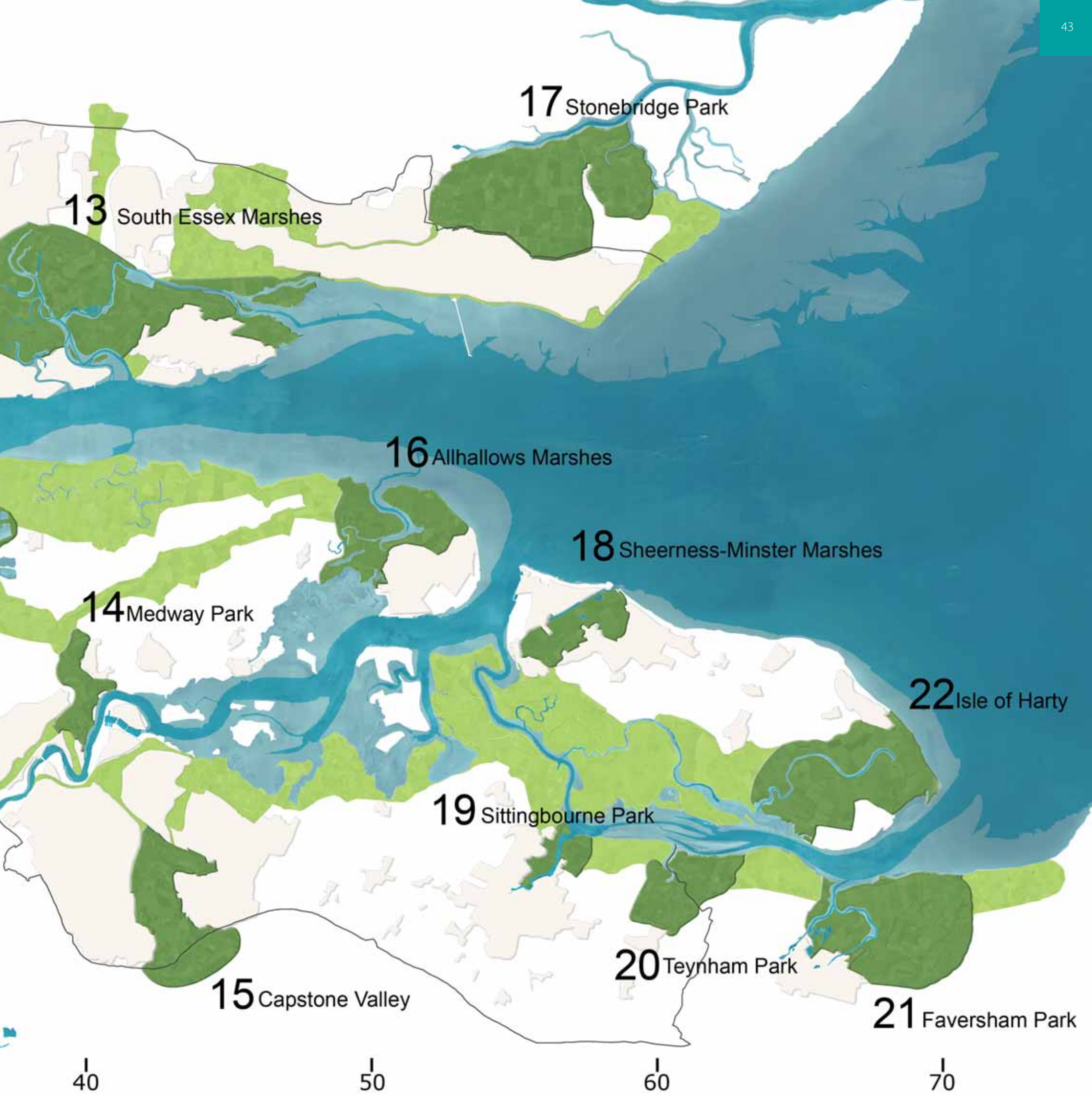
Olympic Legacy Park, Stratford

0km

10

20

30



## 3

## Urban Parklands

Regenerate and develop urban environments as places of culture and social interaction.

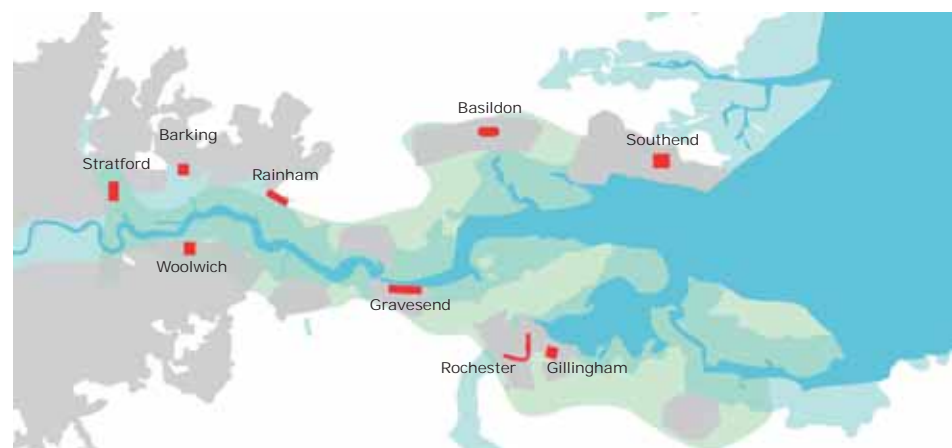
As well as improving blue and green landscapes, Parklands proposes improvement to urban landscapes, which range from dense urban areas to self contained villages in rural areas.

Within urban areas improvements are proposed to public realm including promenades, river walkways, 'urban beaches', squares, high streets, avenues, streets, civic spaces, local parks and play areas. Urban spaces can improve the quality of life for local communities, in terms of improving cultural, social and environmental values. There are also particular health benefits in creating green and open urban areas that provide opportunities for outdoor exercise.

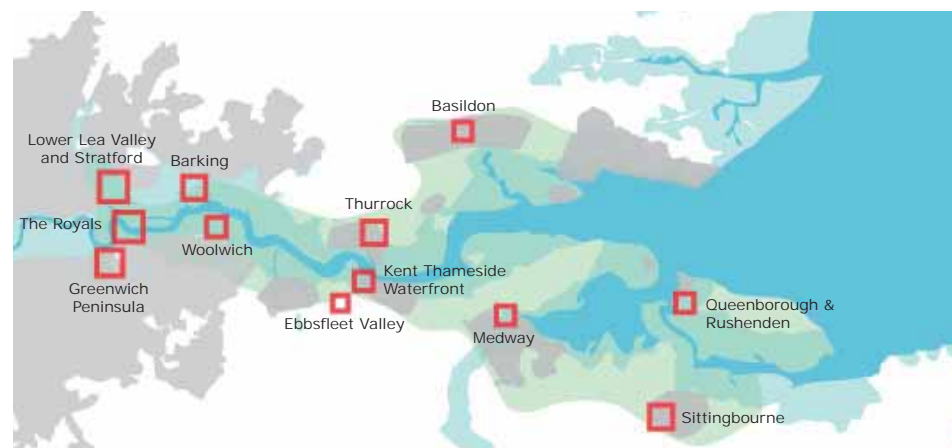
Urban spaces and urban greening are particularly important since they are close to large populations. Improved visual quality will also help to increase values and help to attract investment in these areas.



Integrate urban parks with Parklands



Parkland squares



Key housing sites

► **Rainham Village High Street:** Rainham village's strong historic identity has been a vital asset in driving the regeneration of the surrounding area. English Heritage works with local authorities in historic areas to restore buildings, streets and public realm.

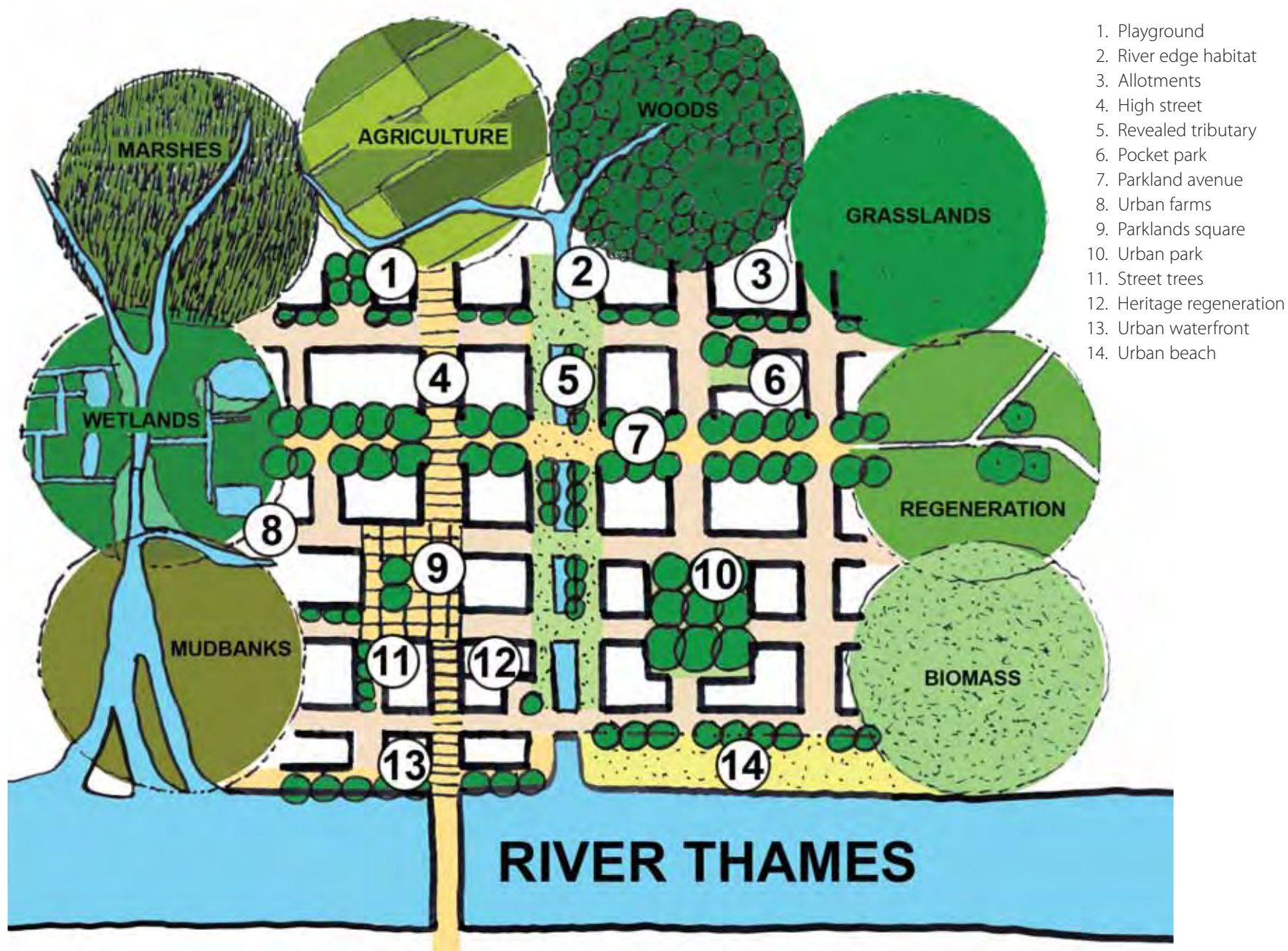
► **Barking Town Centre:** MUF Architects are proposing a number of improvements to important civic spaces. This includes creating an arboretum; filling one open space with a forest; extending the existing walkway to form an arcade; creating a new pedestrian connection; and marking the area in front the Town Hall with a single mature magnolia tree.



Rainham Village High Street, Havering



Barking Town Centre



Urban Parklands Model – greening the urban landscape and improving access for existing and new communities to significant landscapes

► **Gravesend Heritage Quarter:** Gravesend Borough Council is working on a major regeneration project in Gravesend Heritage Quarter. The scheme reconnects the historic link from Gravesend town centre to the river.

► **Great Lines Park:** Based on the restoration of a unique historic landscape of local and national significance, the Great Lines City Park will be designed by and for the people of Medway. The park will offer education, training, sports and recreation opportunities based on historic defences in Chatham.

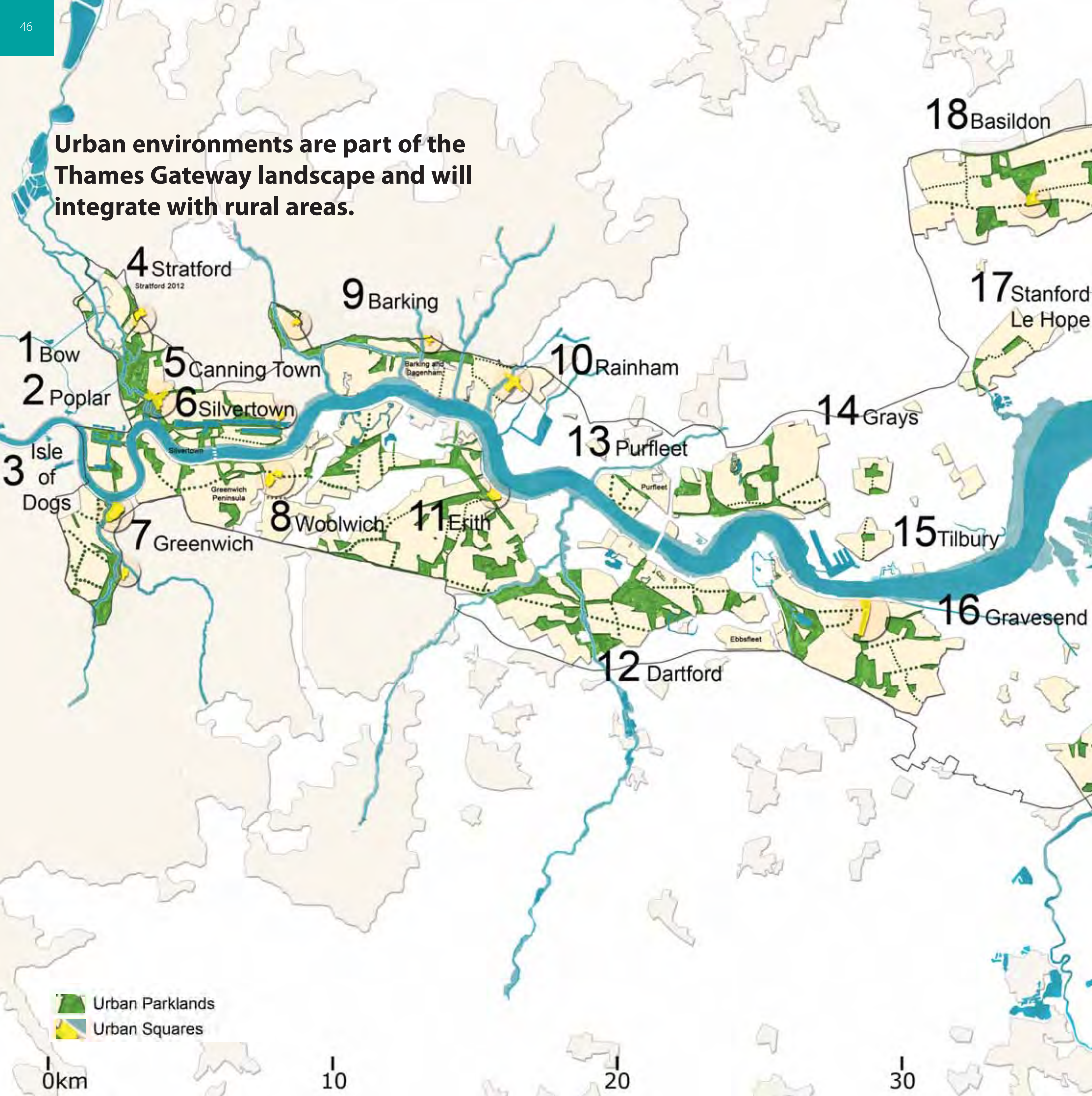


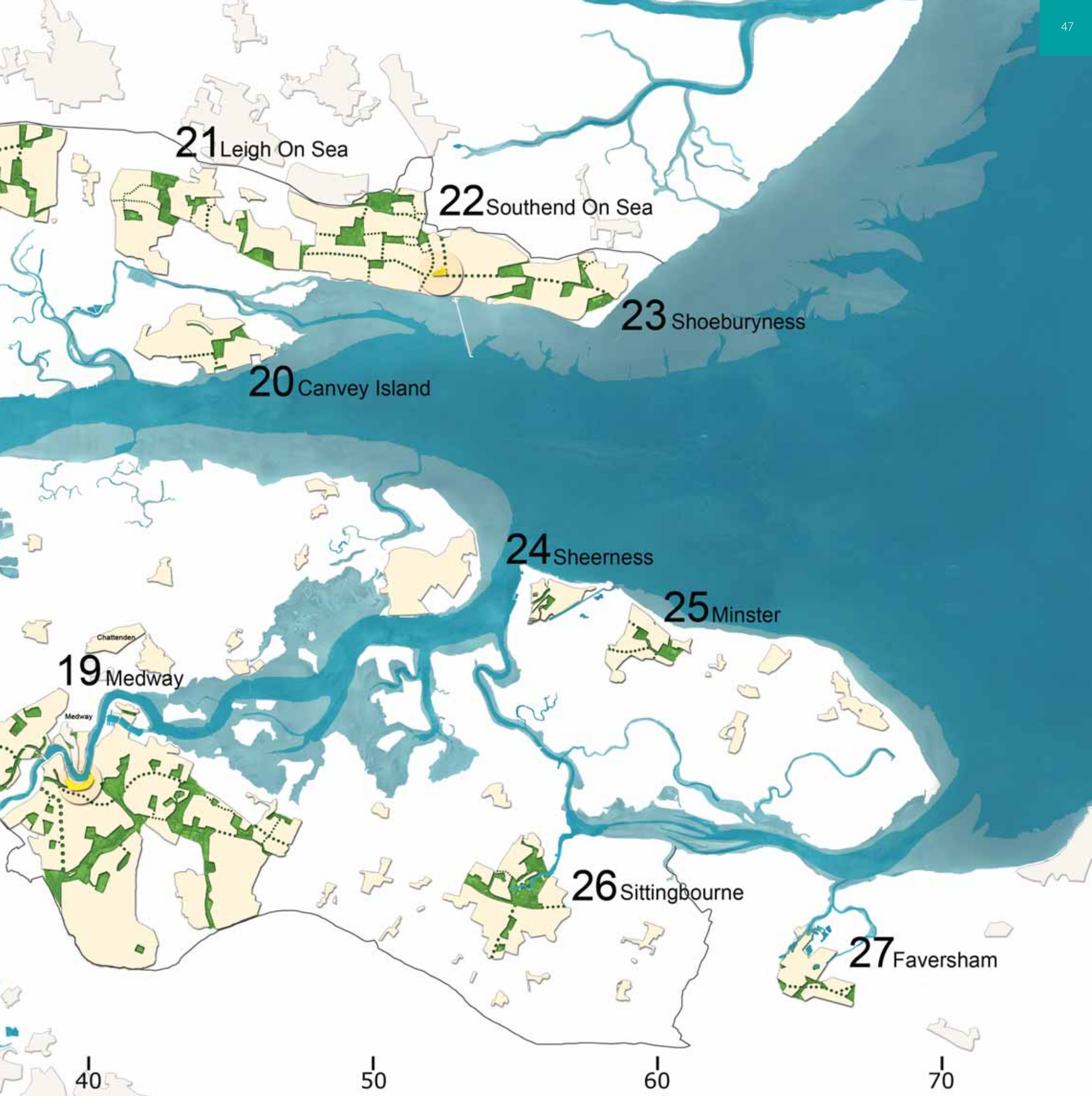
Gravesend Heritage Quarter, Gravesend



Great Lines Park, Medway

**Urban environments are part of the Thames Gateway landscape and will integrate with rural areas.**





21 Leigh On Sea

22 Southend On Sea

23 Shoeburyness

20 Canvey Island

24 Sheerness

25 Minster

19 Medway

26 Sittingbourne

27 Faversham

40

50

60

70



## 4

## Parklands historic environment

Build on the rich history of the area by regenerating the historic environment to provide a clear identity for each community in the Thames Gateway.

The historic environment in the Gateway includes some world famous places and some hidden gems and can be an important expression of local history and culture. The historic environment can play an important role in transforming the economic fortunes of the Thames Gateway.

In Heritage Works, English Heritage points out that the re-use of existing assets with all their embodied energy helps to underpin low carbon sustainable growth.

There has been major investment on the River Lea, in Rochester, and at Shoeburyness but the historic environment – rural, urban and industrial – remains largely untapped. Further opportunities for heritage improvement exist in areas such as Sheerness, Southend and Canning Town among others.

Heritage-led regeneration throughout Thames Gateway has shown how creative and cultural activity can help to bring life to previously declining places.



High House Dovecote, Purfleet



High House Production Campus, Purfleet

◀ **High House, Purfleet:** In 2004, the groundbreaking 'Visionary Thurrock' programme set out to involve local people in the regeneration of Thurrock through a culture-led consultation. One of the most exciting developments is the relocation of the Royal Opera House's (ROH) production facilities from Stratford in East London to a new state-of-the-art Production Campus in Thurrock. As well as housing new purpose-built facilities for the ROH, the campus will provide workspace for other creative industries and artists.



St Mary's Island, Chatham



Faversham, Kent



Tilbury Fort, North Essex



Rochester Castle, Medway

► **Lower Lea Valley:** These historic industrial waterways and surrounding landscape are the centrepiece of the Olympic legacy and a focus for the regeneration of surrounding communities.

► **Gravesend High Street:** Conservation-led area regeneration schemes have transformed the look and feel of Gravesend town centre and the surrounding areas. Commercial and residential properties have been refurbished while major work has been carried out on streets and public spaces, including the refurbishment and repair of Town Pier. The conservation area work carried out in parallel has altered people's perceptions of Gravesend and has led to economic revitalisation. The renewed vibrancy of the town centre has led to further improvement and regeneration across the rest of the borough.

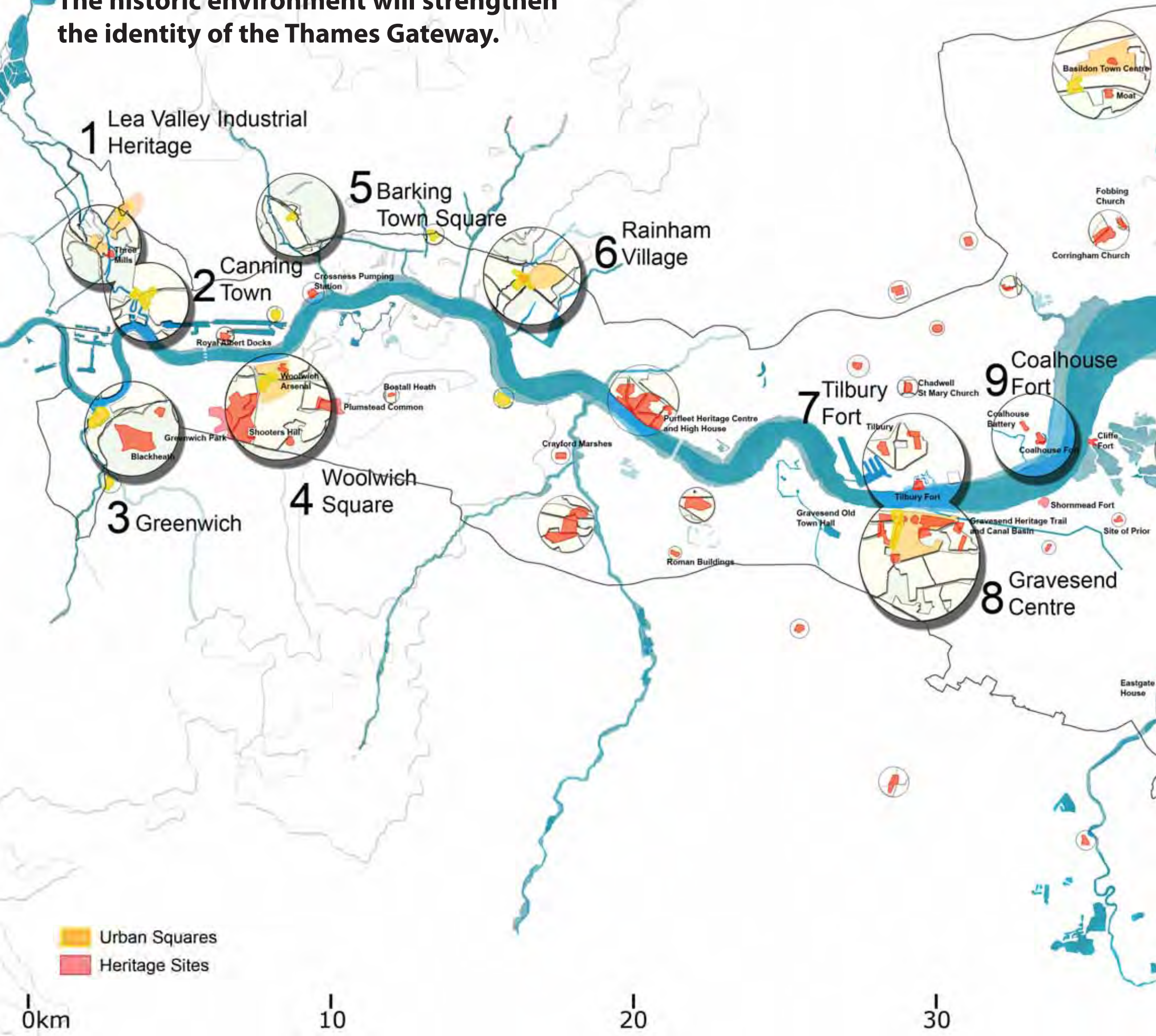


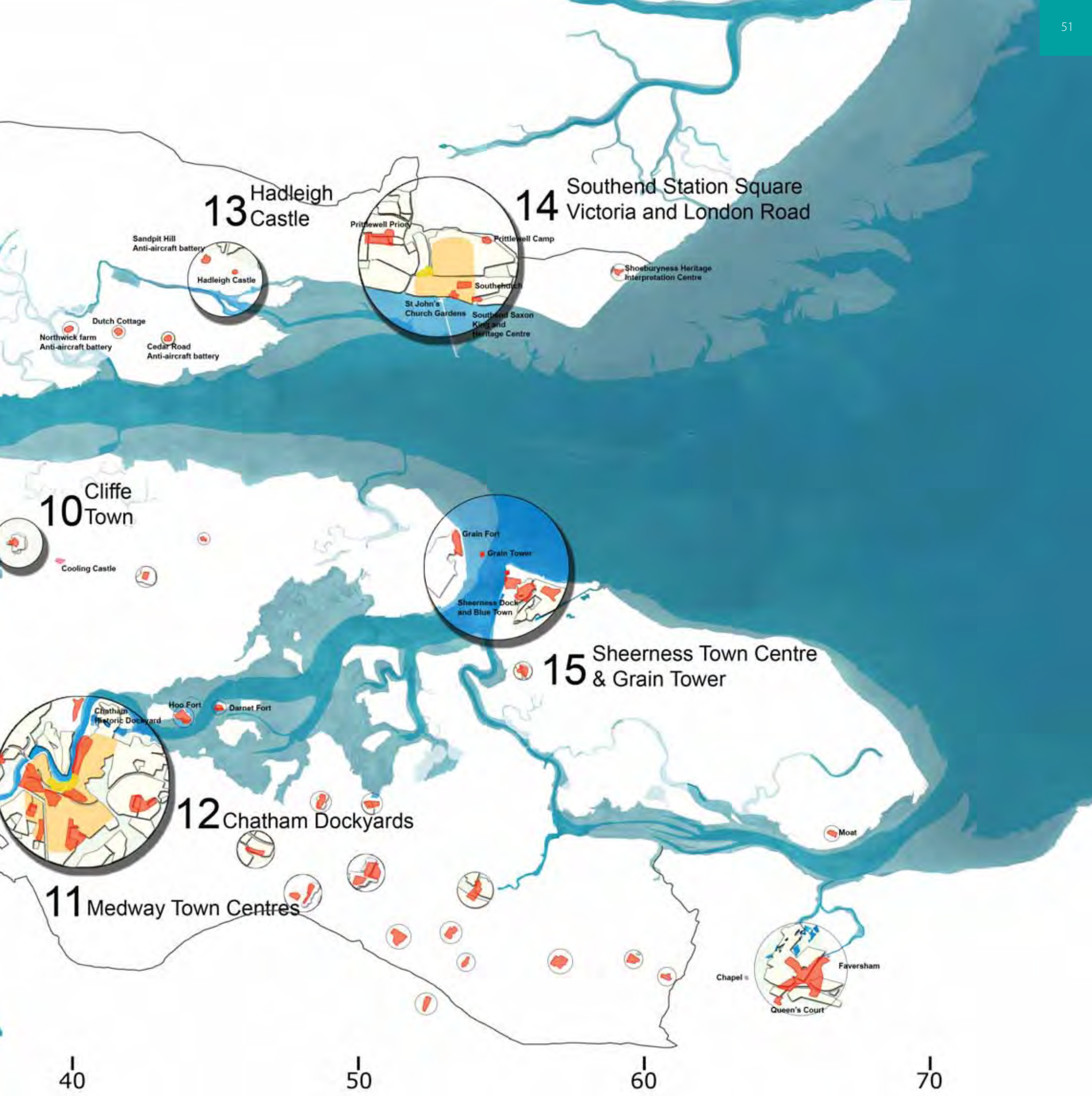
Lower Lea Valley



Gravesend High Street, Gravesend

**The historic environment will strengthen the identity of the Thames Gateway.**





**13** Hadleigh Castle



**14** Southend Station Square  
Victoria and London Road



**10** Cliffe Town



**15** Sheerness Town Centre  
& Grain Tower



**12** Chatham Dockyards



**11** Medway Town Centres



40

50

60

70

## 5

# A connected Parklands landscape

Create a connected  
Parklands landscape  
with the 'green grid', the  
Thames Estuary Path and  
visual and environmental  
improvements to major  
transport corridors.

- ▼ **Lower Lea Valley:** provide public access to the various water courses that link to the River Thames and its tributaries.
- ▼ **Thames and Medway Canal, Gravesham:** This historic transport route has the potential to form the basis of a modern sustainable transport network between destinations in Medway and Gravesend.



Lower Lea Valley



Thames and Medway Canal, Gravesham

Connecting landscapes can link existing and new urban settlements and communities to one another and to green and open spaces, and provide them with an environmental context.

## PARKLANDS GREEN GRID

The development of a continuous 'green grid' in London, South Essex and North Kent is well established. These provide the foundations for Parklands as large scale regional landscapes.

Parklands will be connected to adjacent environments including the River Roach and River Crouch complex, Thames Chase, the Lea Valley and the Kent Downs Area of Outstanding Natural Beauty. It also connects to the East London Green Grid, which sits partially within Thames Gateway.

The Parklands Green Grid follows natural features such as water courses, woodland and topographic features. It also includes existing bridleways, footpaths and agricultural land in rural areas. It will provide a recreational and environmental resource for local people and visitors, and can include new nature trails, footpaths and cycle routes, and restored and enhanced landscapes.

## THAMES ESTUARY PATH

The Thames Estuary Path is a proposed continuous link on the north and south banks of the Estuary from the Isle of Dogs out to the coastal path network. It links 'city to sea', and certain sections already exist. The path passes a number of major landmarks including the O2 Arena, the Thames Barrier, the Estuary forts, and the 'minsters' (churches) among others. It crosses over bridges and passes under viaducts and through tunnels. It runs along busy urban waterfronts, promenades and beaches as well as through quiet rural areas.

Because of industry, port activity and areas of sensitive wildlife, there are some unavoidable obstructions in some locations along the water's edge. It is essential that diversions away from the river are of the highest possible quality.

It is also important that the Thames Estuary Path connects to the 'hinterland' and there could be a series of 'loops' connecting to existing rights of way and transport links so that the path can be enjoyed in parts. Hinterland connections could function as alternative routes in the event of unusually high tides. The Thames Estuary Path will need to be coordinated with the Environment Agency's Thames Estuary 2100 project.

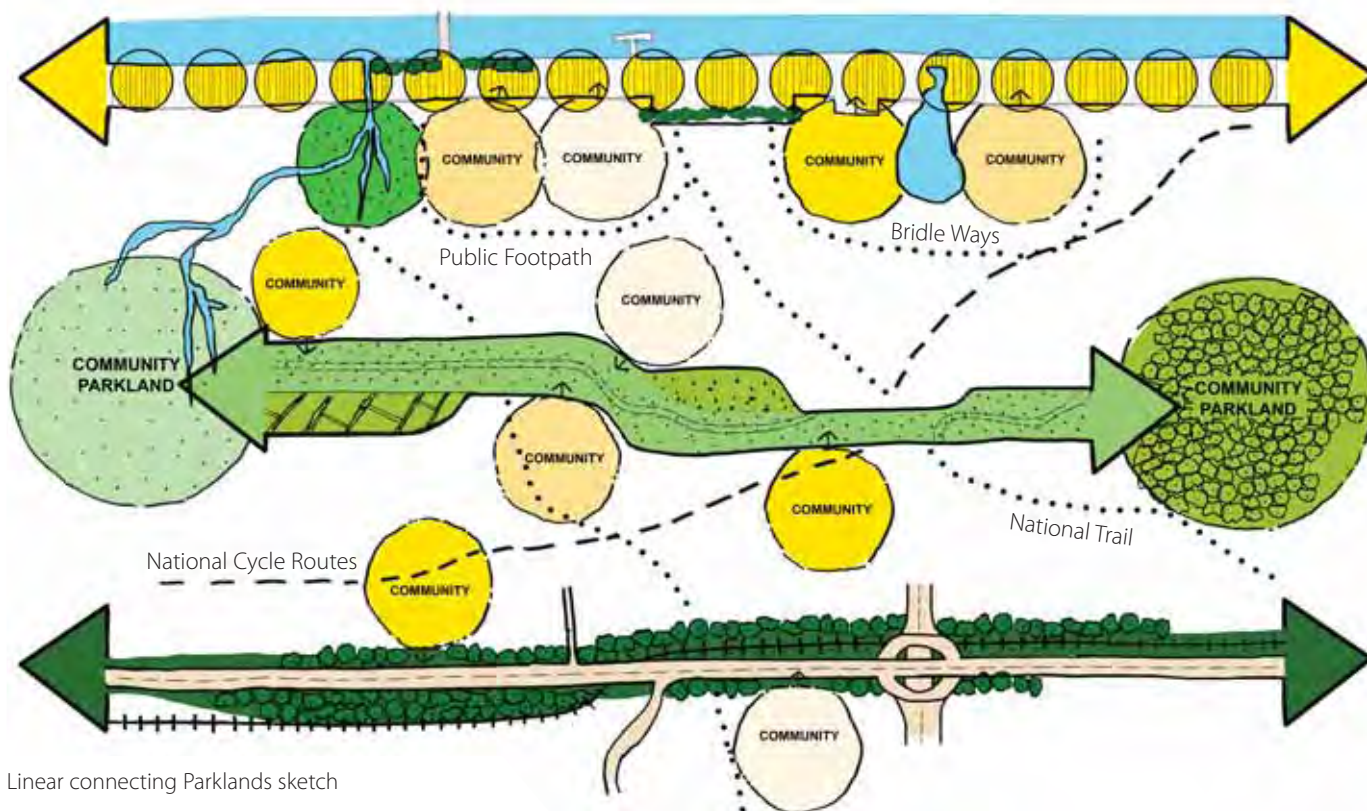
The Thames Path indicated on the map on pages 54-55 is an illustration of the route the path may take. Work is underway to inform more solid proposals.

## TRANSPORT CORRIDORS

Visual and environmental improvements to strategic transport corridors will improve perceptions of Thames Gateway and the experience of travelling through it. These could be seen as large scale landscapes in their own right, and could fulfil a similar role to the Parklands Green Grid. Particular attention should be paid to making improvements at points of arrival and departure, for example at important stations.

There is an opportunity to introduce art and landscape art along these transport corridors and to promote and interpret flagship destinations or points of historical interest. New cycle and pedestrian paths with amenities for local people could also be included. Local connectivity could also be improved along major transport routes – they need not be seen purely as infrastructure for commuters and through traffic.

The interchange and connection with the River Thames as potentially one of the main transport corridors in Thames Gateway is important.



Linear connecting Parklands sketch

#### Thames Estuary Path

- Linear continuous walk and cycle path from London to the sea linking communities to the Thames
- Circular loops along path
- Activating the river front urban and rural waterfronts

#### Green Grid

- Connecting Parklands and communities
- A continuous landscape
- Paths for walking and cycling
- Includes all kinds of landscapes

#### Infrastructure Corridors

- Greening the major infrastructure corridors through the Thames Gateway
- Road and rail infrastructure
- Change perception of visitors and inhabitants
- Linear cycle and footpaths along corridors
- Continuous wildlife habitat corridors



Circular routes connect the Thames Estuary Path with local communities



A continuous Green Grid

▼ **National Cycle Routes:** The National Cycle Network is a comprehensive network of safe and attractive routes to cycle, running throughout the UK. 10,000 miles have recently been completed (2005), one third of which are on traffic-free paths. It is delivered through the policies and programmes of local authorities and other partners, and is coordinated by Sustrans.

▼ **Coastal Path:** Natural England will increase the opportunities available for people to make the natural environment an enriching part of their daily lives. As well as increasing people's enjoyment and understanding of this environment, the aim is to also bring improvements to wildlife and the landscape. To achieve this, Natural England will work with farmers, land managers and public authorities to maintain and develop access and to assist them to successfully manage and benefit from increased public access to the natural environment.

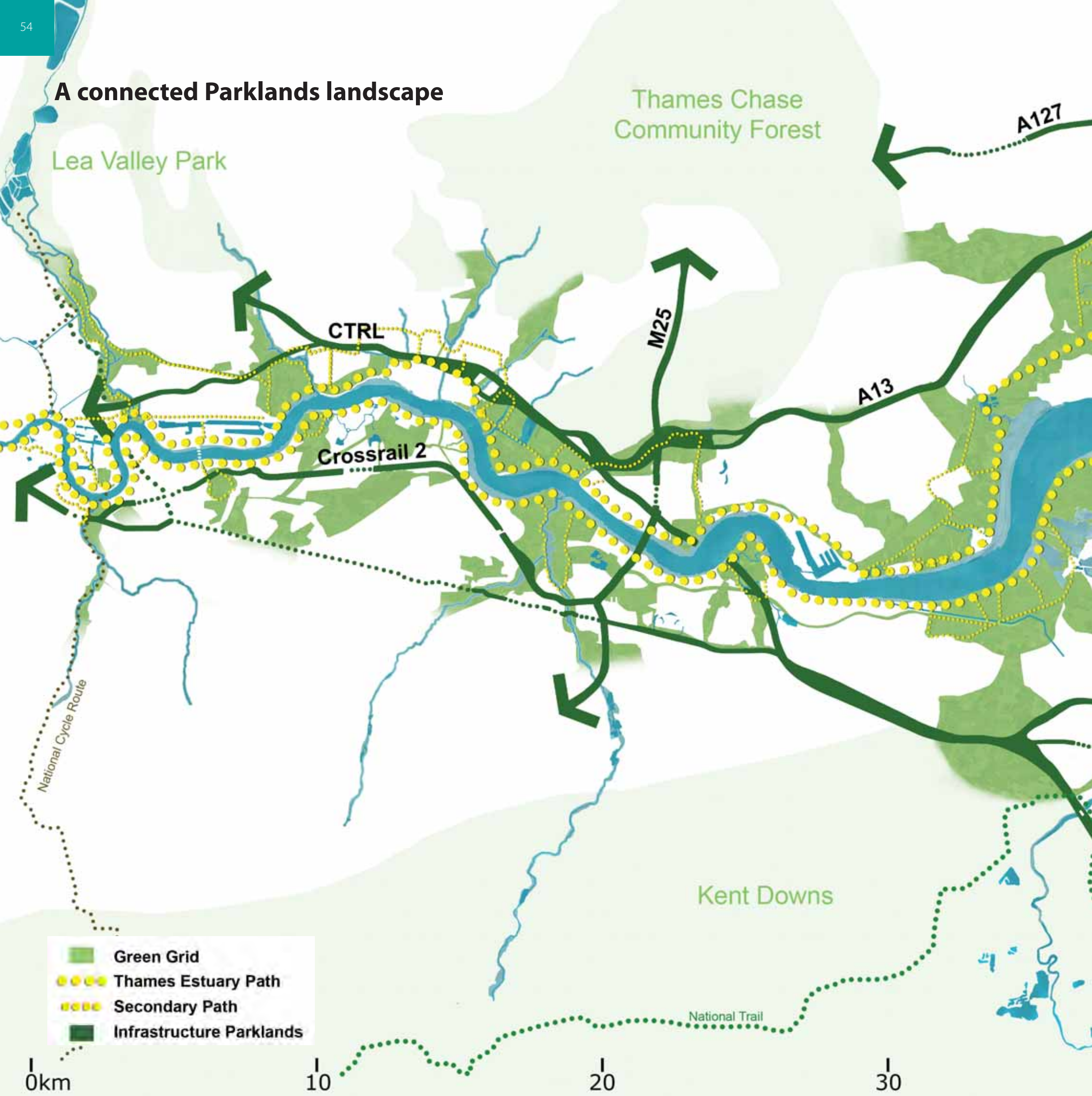


National Cycle Routes



Coastal Path

# A connected Parklands landscape



Lea Valley Park

Thames Chase  
Community Forest

A127

CTRL

M25

A13

Crossrail 2

National Cycle Route

Kent Downs

National Trail

- Green Grid
- Thames Estuary Path
- Secondary Path
- Infrastructure Parklands

0km

10

20

30





## 6

## Agriculture as Parklands

Appreciate agricultural landscapes, enhance their biodiversity and provide opportunities for more local food production in Parklands landscapes.

All landscapes provide visual interest whether they can be actively used by the general public or not. There is value in taking advantage of the visual benefits that agricultural and productive landscapes can provide. This should apply to the blue, green and urban landscapes.

There are also economic benefits in local food production, and it benefits rural regeneration.

Much of the Estuary is in agricultural use already. Controlled grazing can improve the biodiversity value of wildlife sites. The Estuary has long had associations with market gardening, hops, orchards and sheep farming.

In urban areas land is designated for allotments, community gardens and orchards. At a larger scale and in rural environments, tree planting and forestry should also contribute to local materials production. More could also be made of water landscapes as a productive resource.



Explore potential for community gardens and orchards



Explore potential for sustainable aquaculture



Explore potential for new forests and new trees in urban parks



Enhance local food production

▶ **Allotments:** Urban allotments promote and enhance local private food production and provide private open space in close proximity to dwellings.

▶ **Thames Chase Community Forest:** A Community Forest is planned to be a mosaic of wooded landscapes and other land uses, such as farmland, meadows, nature areas, river valleys and public open space. It will be located on the edge of major towns or cities – close to where people live and work. Land ownership includes farmers, local authorities, nature conservation organisations and local businesses.



Allotments



Thames Chase Community Forest

▶ **Mudchute Farm:** The Mudchute Park and Farm was established by the local Isle of Dogs community. Originally a piece of derelict land created during the last century from the spoil from the construction of Millwall Dock, Mudchute is now the largest urban farm in London. The facilities at the farm include an equestrian centre, a café, a shop, an education centre and lots of animals to see.

▶ **High House Community Farm, Purfleet:** The historic three acre site at High House, Purfleet, will form one of the first major projects in Thurrock to develop a community farm. Aside from the farmhouse itself, there are barns, a cottage, stables and sheds that could have a variety of uses. There is also a walled garden and a dovecote, which is protected as a Scheduled Ancient Monument.



Mudchute Farm, Isle of Dogs



High House Community Farm, Purfleet

▶ **Ranscombe Farm:** Ranscombe Farm is one of the richest botanical sites in the British Isles and home to the single most important arable flower field in the UK. The Ranscombe Farm landscape includes arable habitats, extensive ancient woodland and relict fragments of chalk grassland. It provides opportunities for quiet walks among attractive countryside with fascinating flora.

▶ **Community Garden:** Local community gardens are a means of food production and education as well as amenity space for the local residents. Community gardens strengthen local identity and community cohesion as well as the residents' perception of ownership and responsibility for adjacent open spaces.



Ranscombe Farm, Cuxton, North Kent



Community garden, Sittingbourne, Kent

▶ **Jeskyn Farm:** At 147 hectares, Jeskyns Farm near Cobham, owned and managed by the Forestry Commission, is a good example of a different land use, for example orchards, meadows and grassland.

▶ **Medway Swale orchards scheme:** The project will focus on restoration/creation of community orchards including: planting, restoring and managing orchards using traditional varieties and techniques; providing advice to landowners through the development of guidance notes and community workshop training; celebrating local heritage through a variety of events and activities to enjoy the horticultural and social tradition of the area. It will also develop management plans and sustainable end-uses for the fruit, help to conserve and enhance our environment, save on food mileage and support the rural countryside economy.

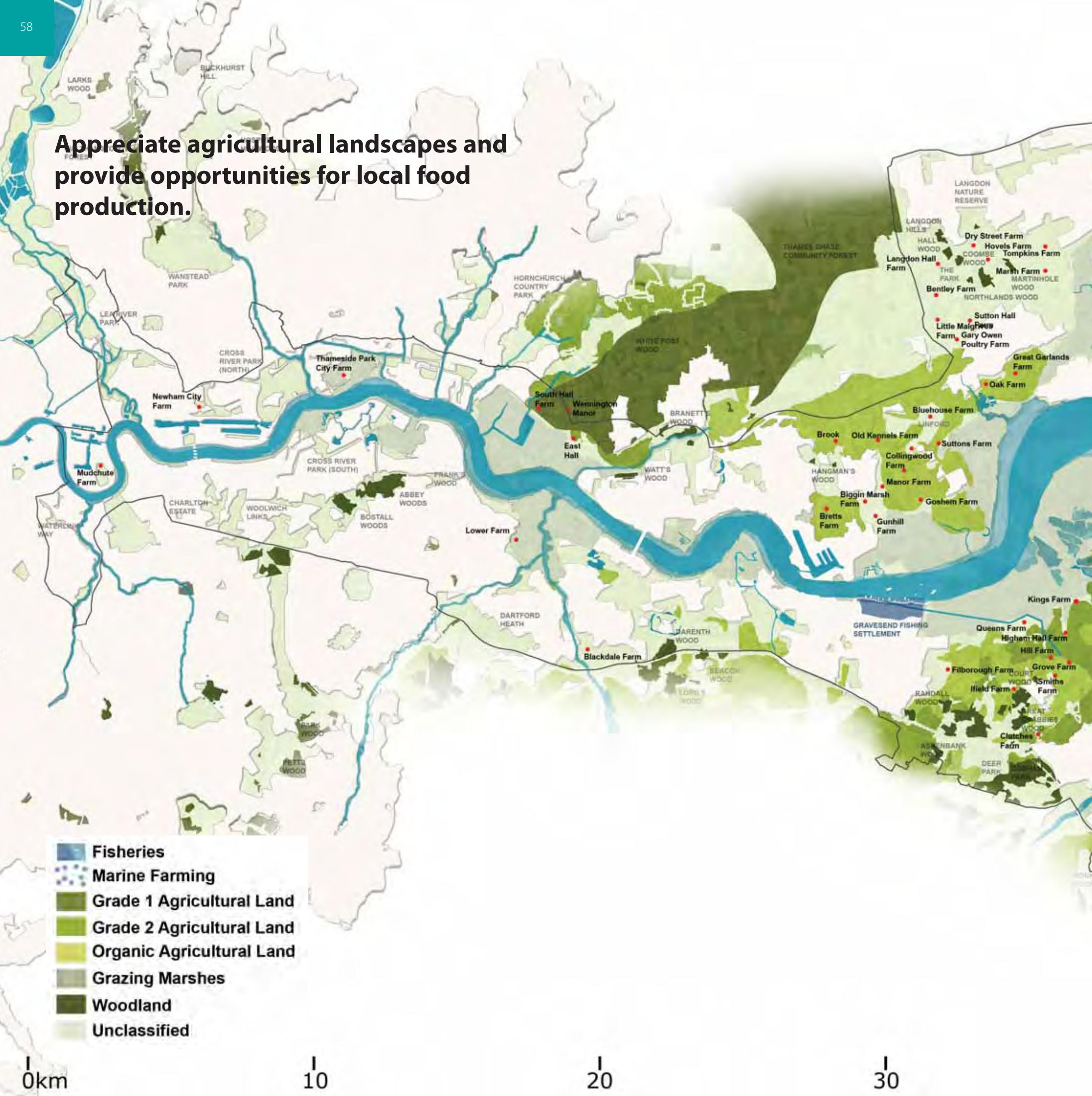


Jeskyn Farm, Cobham, Kent



Medway Swale orchards scheme

**Appreciate agricultural landscapes and provide opportunities for local food production.**





## Parklands and the eco-region

Parklands can contribute to the development of an eco-region in the Thames Gateway.

The Government recently established ambitions for Thames Gateway to become the UK's first eco-region, and an international exemplar of sustainable development. This exciting ambition will greatly benefit from the delivery of the Parklands vision, which aims to improve environmental quality, reduce flood risk, and use resources more efficiently, responding and adapting to climate change.

The large continuous landscapes proposed by Parklands will help to preserve and enhance the unique habitats of the Thames Estuary and increase biodiversity within it. New development will positively contribute to these landscapes and provide new and improved access to the natural environment.

Parklands will also aim to encourage local food and material production within the Thames Gateway and improve perceptions of the agricultural and productive landscape. The improvement of existing and the creation of new green spaces – particularly in urban London – is a key way to mitigate the effects of climate change.

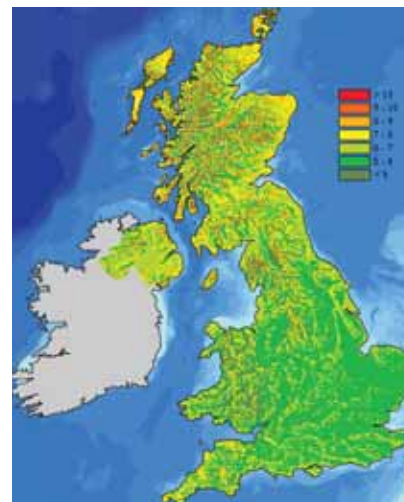
Parklands developments also have an important role to play in providing natural drainage, and in reducing the risk of flooding. Natural drainage can also help to maintain aquifer levels. Like much of Southern England the Thames Gateway is water stressed, and Parklands can help to reduce water demand.

Increased connectivity to high quality local landscapes gives people an opportunity to reduce car use. This will reduce pollutant and carbon emissions, and improve local air quality. This has health benefits and can also increase the quality of life.

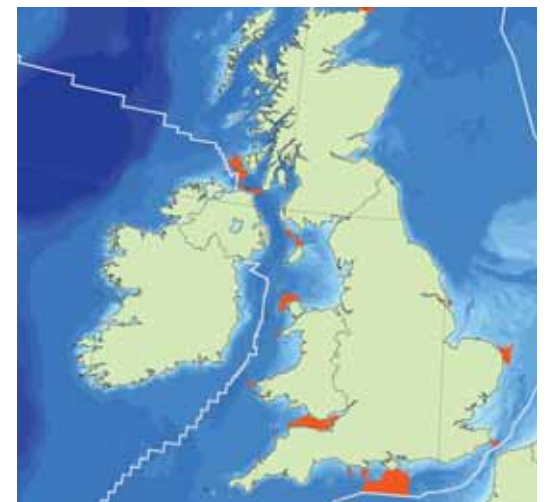
By helping to deliver the Parklands vision, government departments, local authorities and the private sector will help to ensure that the Thames Gateway becomes synonymous with low carbon regeneration and growth all over the world.



Wetland restoration (potentially the biggest in Europe)



Potential for wind power in UK



Potential for tidal power in UK

- ▶ **Salt Marsh Regeneration in South Essex:** Over the last 25 years up to 40 per cent of Essex salt marsh has been lost. The coastal realignment project at Abbotts Hall Farm was designed to allow for the regeneration of salt marsh on the Essex coast. The sea wall – constructed over 300 years ago – was breached in October 2002. Two counter walls have been constructed at either end of the site to protect neighbouring land.



Vange Marshes, South Essex



Canvey Marshes, South Essex

- ▶ **Cliffe Pools RSPB Site:** Cliffe Pools is a new RSPB reserve. Tightly-packed blue lagoons on a bend in the river are perfect for water birds. It is particularly renowned for wading birds, with massed flocks moving here from the adjacent Thames Estuary in winter.

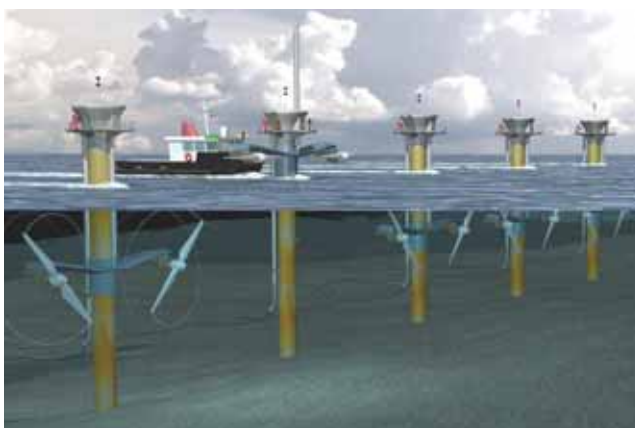


Cliffe Pools RSPB Site, North Kent



Cliffe Pools RSPB Site, North Kent

- ▶ **Underwater Turbine:** New technologies, such as low impact hydrokinetic turbines, could provide renewable generating capacity in future.
- ▶ **Barking Power Station excess heat distribution:** The ecology of the Thames changes as it passes through East London on its way to the North Sea. As it enters the shadow of Barking Power Station the 400MW of heat flushed into the river is so great it would be enough to heat the equivalent of 120,000 new homes over the next 15 years.



Underwater Turbine



Barking Power Station

- ▶ **Sustainable Industrial Park at Dagenham:** As part of the wider London Riverside regeneration, the local authority in partnership with the LDA has developed a vision for Dagenham Dock as a Sustainable Industrial Park. It offers the chance to highlight the regeneration benefits of environmental industry.
- ▶ **Sustainable urban drainage systems:** SUDS such as ponds, wetlands and swales provide additional green areas and interesting features, particularly within the urban environment. SUDs can be useful for urban recreation and also be designed to provide places for wildlife.



SUDS, Greenwich Millennium Village



Sustainable Industrial Park at Dagenham

## 8

## One vision, a thousand projects

The Parklands vision for a coherent and sustainable future can be implemented by local people and organisations over time and in any sequence.

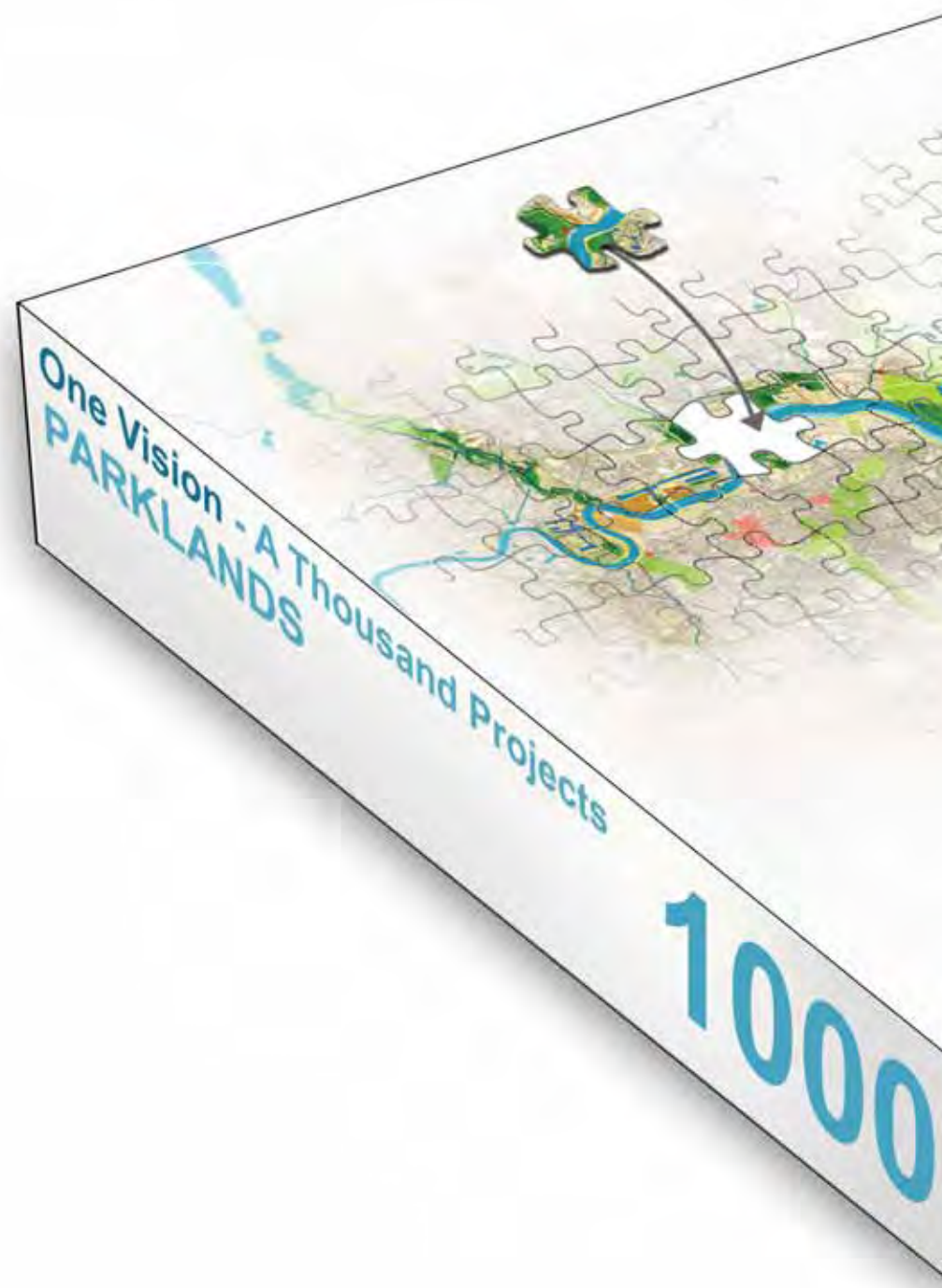
**The Parklands vision: Regenerate and develop urban and rural open spaces which are connected together to create an accessible and coherent landscape. This will improve the quality of life for people who live in the Thames Gateway, and the experience for those who visit and work in it. Parklands spaces should be sustainable and contribute towards the development of the Gateway as an eco-region. The vision can be implemented over time by a variety of organisations at national, regional and local level.**

The Parklands Spatial Framework helps to provide a strategic context for local Parklands projects. It is the 'picture on the box' that allows everyone to work towards a common goal.

The examples illustrated in this document show how the Parklands vision can be implemented in stages over time. It is intended that organisations in the private, public and third sectors define new 'pieces in the jigsaw puzzle'. Successful place-making and environmental improvement is reliant on effective community involvement and a sense of local ownership.

It is intended that individual projects relate to and enrich the vision. These are not expected to include all the themes described in this chapter, but should be consistent with and reinforce the Parklands vision which is – above all – about reinforcing links between communities and the environment.

Parklands is a holistic approach to the spatial planning of the Thames Gateway. It is a vision that will inform the hundreds of interests in the Thames Gateway to undertake all the work that is needed to provide a sustainable legacy for future generations.





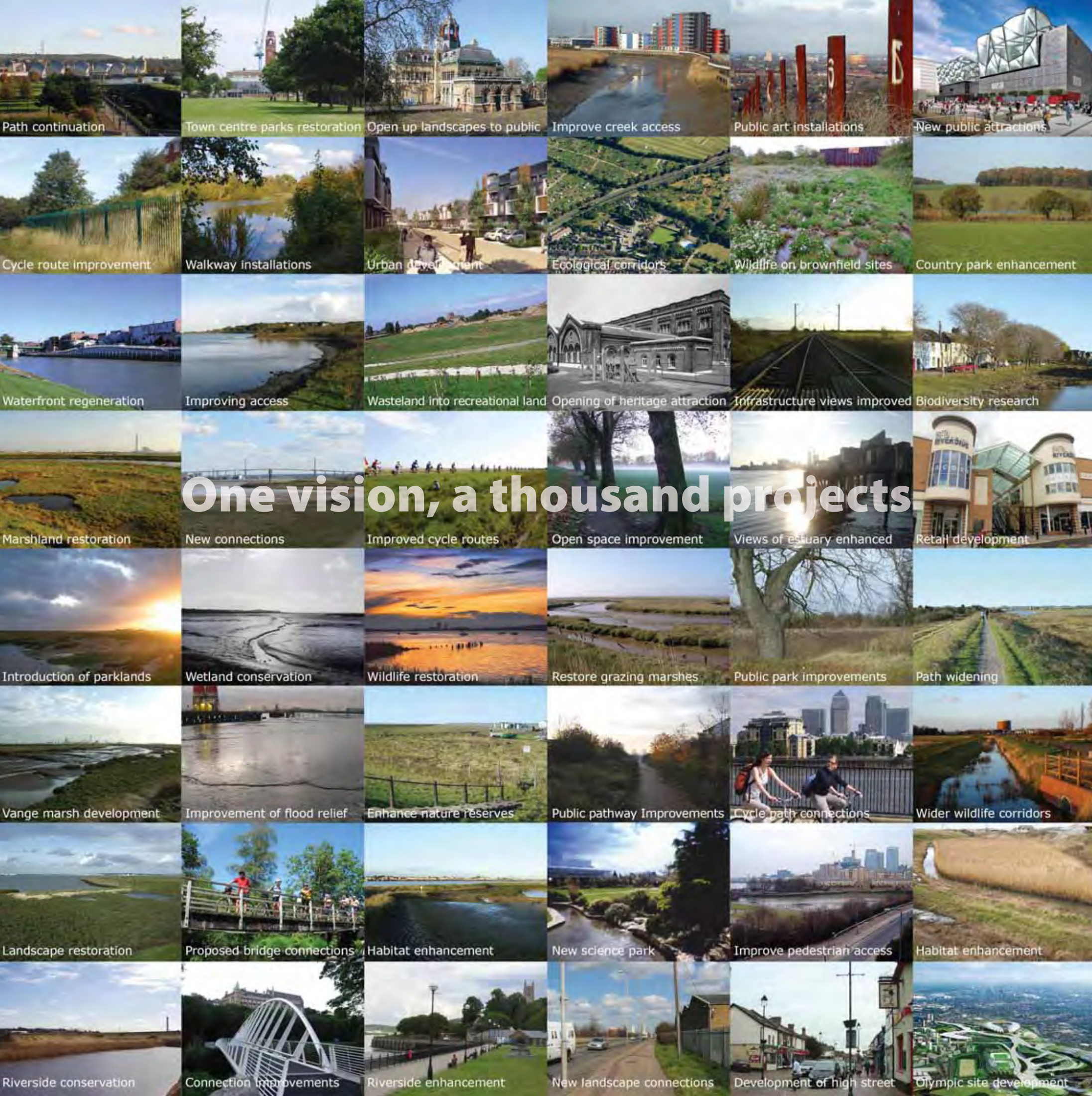
PARKLANDS

brought to you by  
FARRELLS

1000

One Vision - A Thousand Projects  
PARKLANDS





# One vision, a thousand projects

Path continuation

Town centre parks restoration

Open up landscapes to public

Improve creek access

Public art installations

New public attractions

Cycle route improvement

Walkway installations

Urban development

Ecological corridors

Wildlife on brownfield sites

Country park enhancement

Waterfront regeneration

Improving access

Wasteland into recreational land

Opening of heritage attraction

Infrastructure views improved

Biodiversity research

Marshland restoration

New connections

Improved cycle routes

Open space improvement

Views of estuary enhanced

Retail development

Introduction of parklands

Wetland conservation

Wildlife restoration

Restore grazing marshes

Public park improvements

Path widening

Vange marsh development

Improvement of flood relief

Enhance nature reserves

Public pathway improvements

Cycle path connections

Wider wildlife corridors

Landscape restoration

Proposed bridge connections

Habitat enhancement

New science park

Improve pedestrian access

Habitat enhancement

Riverside conservation

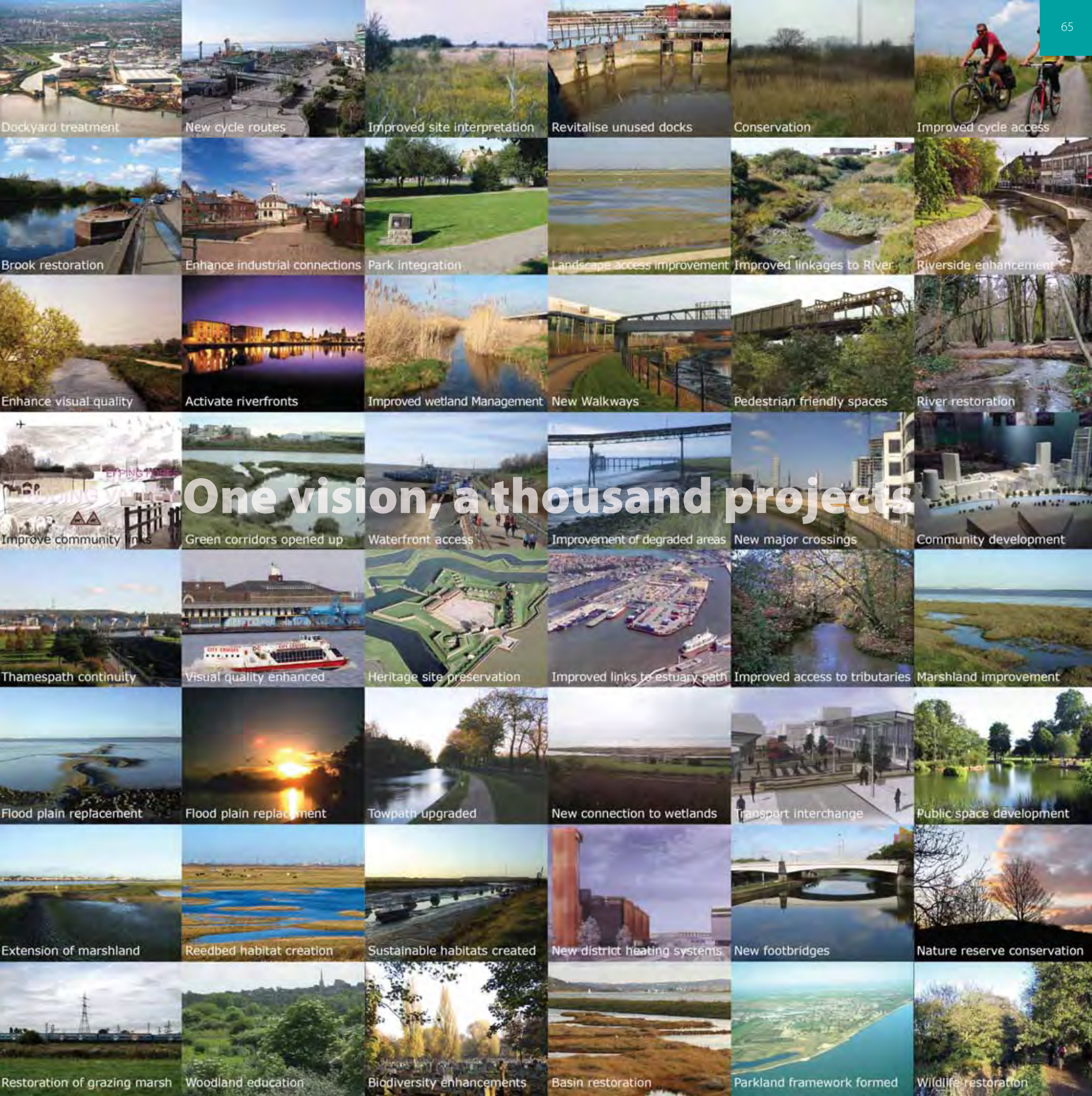
Connection improvements

Riverside enhancement

New landscape connections

Development of high street

Olympic site development



# One vision, a thousand projects

Dockyard treatment

New cycle routes

Improved site interpretation

Revitalise unused docks

Conservation

Improved cycle access

Brook restoration

Enhance industrial connections

Park integration

Landscape access improvement

Improved linkages to River

Riverside enhancement

Enhance visual quality

Activate riverfronts

Improved wetland Management

New Walkways

Pedestrian friendly spaces

River restoration

Improve community links

Green corridors opened up

Waterfront access

Improvement of degraded areas

New major crossings

Community development

Thamespath continuity

Visual quality enhanced

Heritage site preservation

Improved links to estuary path

Improved access to tributaries

Marshland improvement

Flood plain replacement

Flood plain replacement

Towpath upgraded

New connection to wetlands

Transport interchange

Public space development

Extension of marshland

Reedbed habitat creation

Sustainable habitats created

New district heating systems

New footbridges

Nature reserve conservation

Restoration of grazing marsh

Woodland education

Biodiversity enhancements

Basin restoration

Parkland framework formed

Wildlife restoration

# Acknowledgements

Communities and Local Government would like to extend sincere thanks to all those who have been involved in the development of the Parklands vision.

## Picture credits

Every effort has been made to contact copyright holders for permission to reproduce images. If any of the information below is incorrect please contact Communities and Local Government and it will be rectified in any subsequent new edition or reprint.

Front & back covers Pages 6 & 7	Thames Estuary Sunrise, London Sunrise Across the Estuary	©Peter Young/fotoLibra Photography by Ian James. www.ianjphoto.ndirect.co.uk
Page 9	Crowstone, Westcliff	Photography by Ian James. www.ianjphoto.ndirect.co.uk
Page 9	Hadleigh Castle, Essex	Photography by Ian James. www.ianjphoto.ndirect.co.uk
Page 9 Page 9	Sheppey Bridge, North Kent Estuary moorings, Leigh	Photography by Darius Wilson Photography by Ian James, www.ianjphoto.ndirect.co.uk
Pages 10 & 11	The Outer Thames Estuary looking north towards Southend in Essex	©David Young /fotoLibra
Page 13	Hadleigh Castle, Essex, 1829, by John Constable	Yale Center for British Art, New Haven, USA
Page 14 Page 15	River Thames catchment Doggerland, 10000 BC	Farrells Source: Fig 4 from B. J. Coles 1998 Doggerland: a speculative survey, in Proceedings of the Prehistoric Society 64, 45-81. Map drawn by S. Rouillard. Reproduced by permission of the British Geological Survey. © NERC. All rights reserved. IPR/104-149C
Page 15	Geological map	Farrells
Page 15	Wilderness pie chart	Farrells
Page 15	Landscape Character Areas	Farrells
Page 15	Topography	Farrells
Page 15	Marsh Landscapes, Hoo Peninsula	Martin Birgel, Farrells
Pages 16 & 17	Natural Landscape	Farrells
Page 18	Gravesend High Street, Gravesham	Farrells
Page 18	Dutch Cottage, Canvey Island	Photo: Oneblackline

Page 18 Page 18	Southend Pier, Essex Paddle Steamer on the Thames, Woolwich	Adrian Warred/Dae Sasitorn www.lastrefuge.co.uk The Woolwich Free Ferry, c. 1906-09 (H4415) Newham Archives & Local Studies Library
Page 18 Page 18 Page 19	Urban areas 1858-1873 Urban areas 1891-1895 Exploration	Farrells Farrells (D2575) © National Maritime Museum, Greenwich, London
Page 19 Page 19	Trade Migration	(H4931) Tower Hamlets Local History Collection (F3201) © National Maritime Museum, Greenwich, London
Page 19	Medway Map 1800	Old Map Medway from Edward Hasted's 'The History and Topographical Survey of Kent' published between 1797-1801 from the collection of Hoo Ness Yacht Club
Page 19	London to Margate map 1850	Bodleian Library, University of Oxford – C.17: 8 (83) London to Margate Map
Page 19	Essex map 1900	Image printed with the permission of the Foxearth and District Local History Society
Page 19 Page 19 Page 19 Page 20 & 21 Page 20	Urban growth 1905-1922 Urban growth 1931-1940 Urban growth 2000 Human Landscape pie chart Old Rochester, Kent	Farrells Farrells Farrells Farrells Medway Archives and Local Studies Centre, Couchman Collection
Page 20	View of London Dock 1805	William Daniel's 1803 painting of 'A View of the new London Docks at Wapping', © Museum of London
Page 20	Thames Estuary Extensive Marshes 1805	Bodleian Library, University of Oxford – C17 (26) 1805 London Map Motoco Enterprises Limited, re: www.motco.com
Page 21 Page 21 Page 21 Page 21	Gravesend 1814, Gravesham Main image – Human Landscape Tilbury Power Station Powerlines near Kingsnorth Power Station, Kent	Farrells Photo: Clem Rutter, Rochester, Kent Photo: Clem Rutter, Rochester, Kent
Pages 22 & 23	View of Thames Gateway within East London	© Peter Matthews, Foliophoto
Page 24 Page 24 Page 24	Cliffe Pools gravel works, North Kent Swanscombe brownfield site, Kent Grays Industrial Waterfront	Mark Loos, Medway Swale Estuary Partnership Farrells Farrells



Page 25	Index of Multiple Deprivation graphic	Source: CABE/Communities and Local Government	Page 42 & 43	New Parklands	Farrells
Page 25	Average House Prices graphic	Source: CABE/Communities and Local Government	Page 42	Olympic Legacy Park, Stratford	London 2012
Page 25	UK temperature predicted change 1960 & 2080	Farrells	Page 44	Rainham Village High Street, Havering	Wikimedia copyright free
Page 25	Tilbury Riverside Fort sea wall	Pixelwork on behalf of Thames Gateway South Essex	Page 44	Barking Town Centre	muf architecture/art Express Photos
Page 25	Thames Barrier	Photo: Andy Roberts	Page 44	Parkland Squares	Farrells
Page 25	Lower Lea Valley	Farrells	Page 44	Key housing sites	Farrells
Pages 26 & 27	View of the River Medway	Adrian Warred/Dae Sasitorn www.lastrefuge.co.uk	Page 45	Urban Parklands Model	Farrells
Page 28 (all)	Various Thames Gateway Parklands engagement workshops	Farrells	Page 45	Integrated Parklands	Farrells
Page 29	Blue, Green, Brown Parklands diagram	Farrells	Page 45	Gravesend Heritage Quarter, Gravesham	Developer – Edinburgh House Estates Ltd., Development Partner – Gravesham Borough Council, Architect – Leslie Jones Architects
Page 29	'Blue landscape', Swale Estuary	Photo: Clem Rutter	Page 46 & 47	Great Lines Park, Medway	Richard Cottee – Medway Council
Page 29	'Green landscape', Dartford Heath	Peter Beard, Landroom	Page 48	Green Urban Parklands	Farrells
Page 29	'Brown landscape', East Tilbury	Copyright English Heritage	Page 48	High House Dovecote, Purfleet	High House Dovecote, Purfleet, August 2007, Alex Taylor
Page 30	Connections to adjacent landscape	Farrells	Page 49	High House Production Campus, Purfleet	No credit necessary
Page 30	Emscher Park incorporates large scale industry	Farrells	Page 49	St Mary's Island, Chatham	© English Heritage
Page 30	Industrial heritage in Emscher Park	Farrells	Page 49	Faversham, Kent	Medway Swale Estuary Partnership
Page 31 (all)	Various sketches illustrating connection approaches	Farrells	Page 49	Tilbury Fort, North Essex	© English Heritage
Pages 32 & 33	Southend Pier	Renaissance Southend/Southend Regeneration	Page 49	Rochester Castle, Medway	© English Heritage
Pages 34 & 35	Parklands Spatial Framework	Farrells	Page 49	Gravesend High Street, Gravesham	© English Heritage
Page 36	Medway River Front	Farrells	Pages 50 & 51	Parklands Historic Environment	Farrells
Page 36	Cliffe Pools	Photo: Clem Rutter	Page 52	Thames and Medway Canal	Photo: Canthusus
Page 37	Water Parklands concept drawing	Farrells	Page 53	Circular Routes drawing	Farrells
Page 37	Oare slipway, Faversham	Mark Loos, Medway Swale Estuary Partnership	Page 53	Green Grid drawing	Farrells
Page 37	Restoration of River Quaggy, Greenwich	Courtesy of the Environment Agency	Page 53	Linear Connections Sketch	Farrells
Pages 38 & 39	Water Parklands	Farrells	Page 53	National Cycle Routes	J Bewley/Sustrans
Page 40	Flag Riverside Country Park, Medway	Mark Loos, Medway Swale Estuary Partnership	Page 53	Coastal Path	www.badgersdenlodge.co.uk
Page 40	Rainham Marshes, Thurrock	Farrells	Pages 54 & 55	A connected Parklands landscape	Farrells
Page 40	Rainham Marshes Visitor Centre, Thurrock	Peter Beard, Landroom	Page 56 (all)	Agriculture drawings	Farrells
Page 40	Lea River Park:	Peter Beard, Landroom	Page 57	Allotment image	Photo courtesy of Darlington Borough Council
Page 41	Parklands Model linking River Thames to Tributaries	© London Thames Gateway Development Corporation	Page 57	Thames Chase Community Forest	Forestry Commission
Page 41	Ecology Park, Greenwich Peninsula	Farrells	Page 57	Mudchute Farm, Isle of Dogs	Farrells
Page 41	Shorne Woods Visitor Centre, Gravesham	Farrells	Page 57	High House Community Farm, Purfleet	Copyright of Thurrock Local History Society
		Tony Day – Trust for Urban Ecology	Page 57	Ranscombe Farm, Cuxton, North Kent	Wikimedia copyright free
		Farrells	Page 57	Community Garden Sittingbourne, Kent	Community Garden Ceres Court, Sittingbourne'
			Page 57	Jeskyn Farm, Cobham, Kent	Courtesy of Groundwork Kent & Medway
			Page 57	Medway Swale orchards scheme	Kent Thameside Regeneration Partnership – Andrew Critchell, photographer
			Pages 58 & 59	Agriculture Parklands	Mark Loos, Medway Swale Estuary Partnership
			Page 60	Wetland Restoration	Farrells
			Page 60	Potential for wind power in UK	Farrells
			Page 60	Potential for tidal power in UK	Farrells
			Page 61	Vange Marshes, South Essex	DTI, 2004. <i>Atlas of UK Marine Renewable Energy Resources</i> . Technical Report.
			Page 61	Canvey Marshes, South Essex	Paul Fisher, RSPB images
			Page 61	Cliffe Pools, RSPB Site, North Kent	Pixelwork on behalf of Thames Gateway South Essex
			Page 61	Avocet at Cliffe	RSPB Images
			Page 61	Underwater Turbine	RSPB Images
			Page 61	Barking Power Station	Courtesy of Marine Current Turbines TM
			Page 61	Sustainable Industrial Park at Dagenham	Copyright of Barking Power Station
			Page 61	SUDS, Greenwich Millennium Village	Sustainable Industrial Park at Dagenham – source = Ford Motor Company
			Pages 62 & 63	Jigsaw image	Farrells
			Pages 66 & 67	Large Estuary drawing	Farrells
			Pages 64 & 65	Thames Gateway Parklands montage	Farrells



